

ITEM NO.	QTY.	PART NO.	DESCRIPTION
1	1	530258	LPCS, Post Weldment
2	1	530263	LPCS, Base Tube
3	1	334116	LPCS, Caster Stem Assembly
4	1	334105	LPCS, Toeboard Bracket
5	1	834108	Wheel, 4in.
7	4	110451	Washer, 1/2 Flat
8	2	110352	Nut, Lock 1/2"-13
9	2	110110	Hitch Pin 3/4" X 4.5"
11	1	110382	Nut, Lock 3/4"-10
12	2	110481	Washer, 3/4" Flat
13	1	334107	LPCS, Sheave Box Assembly
16	1	LB-1500	Label, "1500 lb Capacity..."
17	1	WL-FALL	Warning Label, Fall Hazard
18	1	LB-LPCSWR	Label, LPCS Wire Rope Insertion
15	2	110253-0	Bolt 1/2"-13 x 3"
16	1	110285-0	Bolt 3/4"-10 x 5"
17	1	WL-EPL	Warning Label, Electrical Power Lines
18	1	LB-BEEUSA3	Label, Bee Access USA 3"

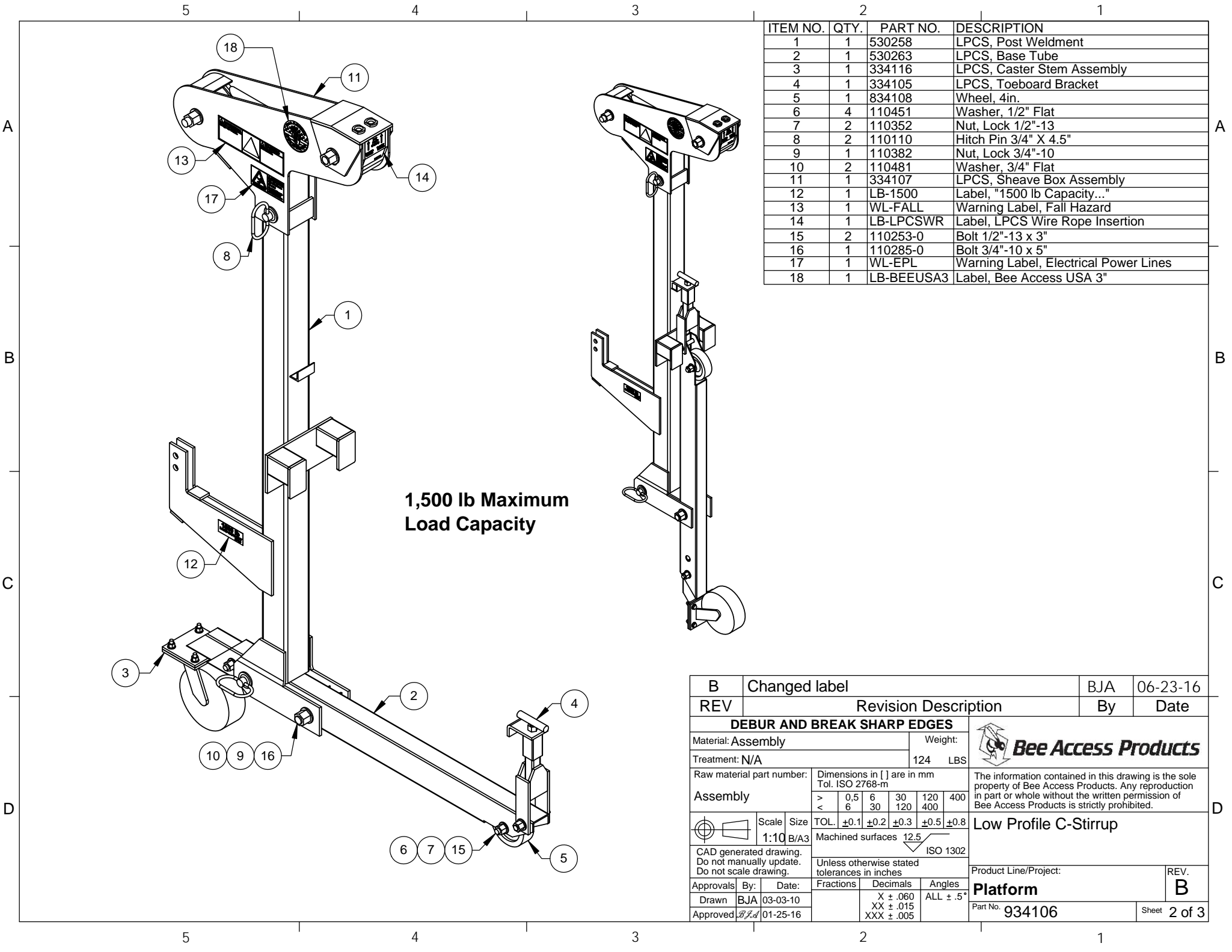
**1,500 lb Maximum Load Capacity**

B	Changed label	BJA	06-23-16
REV	Revision Description	By	Date
<b>DEBUR AND BREAK SHARP EDGES</b>			
Material: Assembly		Weight: 124 LBS	
Treatment: N/A			
Raw material part number:	Dimensions in [ ] are in mm Tol. ISO 2768-m		
Assembly	>	0,5	6 30 120 400
	<	6	30 120 400
	TOL.	±0.1 ±0.2 ±0.3 ±0.5 ±0.8	
	Machined surfaces	12.5	
CAD generated drawing. Do not manually update. Do not scale drawing.		ISO 1302	
Unless otherwise stated tolerances in inches		Product Line/Project:	
Approvals	By:	Date:	REV.
Drawn	BJA	03-03-10	<b>Platform</b>
Approved	BJA	01-25-16	Part No. <b>934106</b>
			Sheet 1 of 3




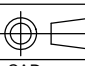
The information contained in this drawing is the sole property of Bee Access Products. Any reproduction in part or whole without the written permission of Bee Access Products is strictly prohibited.

**Low Profile C-Stirrup**



**1,500 lb Maximum Load Capacity**

ITEM NO.	QTY.	PART NO.	DESCRIPTION
1	1	530258	LPCS, Post Weldment
2	1	530263	LPCS, Base Tube
3	1	334116	LPCS, Caster Stem Assembly
4	1	334105	LPCS, Toeboard Bracket
5	1	834108	Wheel, 4in.
6	4	110451	Washer, 1/2" Flat
7	2	110352	Nut, Lock 1/2"-13
8	2	110110	Hitch Pin 3/4" X 4.5"
9	1	110382	Nut, Lock 3/4"-10
10	2	110481	Washer, 3/4" Flat
11	1	334107	LPCS, Sheave Box Assembly
12	1	LB-1500	Label, "1500 lb Capacity..."
13	1	WL-FALL	Warning Label, Fall Hazard
14	1	LB-LPCSWR	Label, LPCS Wire Rope Insertion
15	2	110253-0	Bolt 1/2"-13 x 3"
16	1	110285-0	Bolt 3/4"-10 x 5"
17	1	WL-EPL	Warning Label, Electrical Power Lines
18	1	LB-BEEUSA3	Label, Bee Access USA 3"

B	Changed label	BJA	06-23-16												
REV	Revision Description	By	Date												
<b>DEBUR AND BREAK SHARP EDGES</b>															
Material: Assembly		Weight: 124 LBS													
Treatment: N/A		 <p>The information contained in this drawing is the sole property of Bee Access Products. Any reproduction in part or whole without the written permission of Bee Access Products is strictly prohibited.</p>													
Raw material part number:															
Assembly		Dimensions in [ ] are in mm Tol. ISO 2768-m <table border="1"> <tr> <td>&gt;</td> <td>0,5</td> <td>6</td> <td>30</td> <td>120</td> <td>400</td> </tr> <tr> <td>&lt;</td> <td>6</td> <td>30</td> <td>120</td> <td>400</td> <td></td> </tr> </table>		>	0,5	6	30	120	400	<	6	30	120	400	
>	0,5	6	30	120	400										
<	6	30	120	400											
 Scale Size 1:10 B/A3		TOL. ±0.1 ±0.2 ±0.3 ±0.5 ±0.8 Machined surfaces 12.5 ISO 1302													
CAD generated drawing. Do not manually update. Do not scale drawing.		Unless otherwise stated tolerances in inches Product Line/Project: <b>Platform</b>													
Approvals By:	Date:	Fractions	Decimals												
Drawn BJA	03-03-10		X ± .060 XX ± .015 XXX ± .005												
Approved BJA	01-25-16		ALL ± .5°												
		Part No. <b>934106</b>													
		Sheet 2 of 3													