

5 4 3 2 1

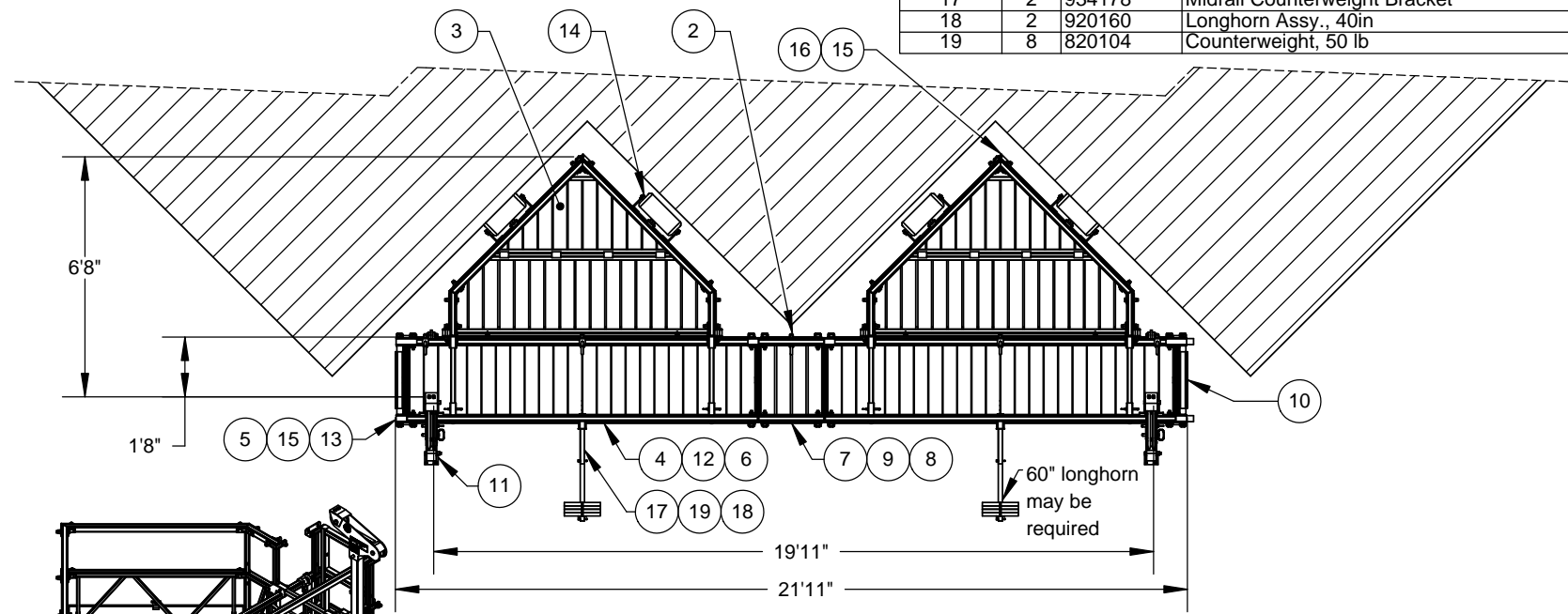
A

Estimated platform self weight (not incl. hoists, cable & rope): 1,350lb

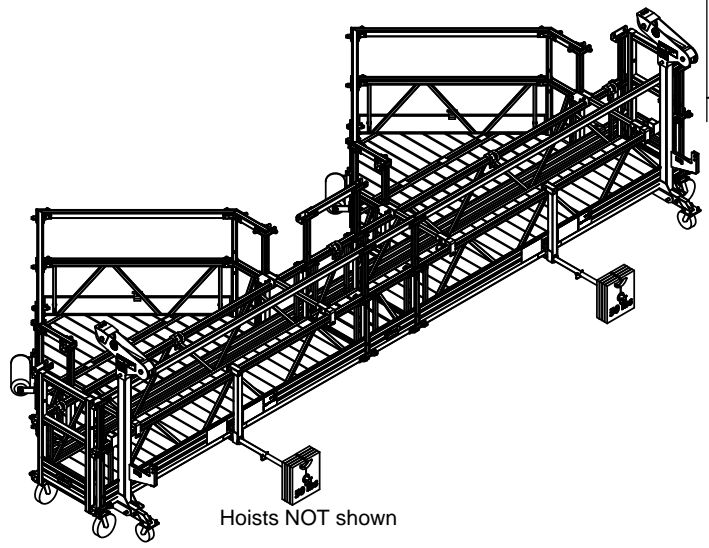
USING 1,500 LB HOISTS:  
 -1,000lb Maximum distributed load capacity  
 -Maximum point load: 120 lb/linear ft.  
 -1,000lb Maximum distributed load between hoists (on "base" platform)  
 -250lb Maximum load per porch section

ITEM NO.	QTY.	PART NO.	DESCRIPTION
1	1	SR1485-999	Existing Building
2	5	970123	Static Line Bracket Assembly
3	2	SR1485-001	Special Porch Assembly
4	4	421063	Side Frame, 3m
5	4	421508	U-Frame w/ 8 Quickpins
6	2	422903	Deck, 3m
7	2	421005	Side Frame, 0.5m
8	1	422950	Deck, 0.5m
9	2	422055	Guardrail, 0.5m
10	2	423072	End Guardrail
11	2	934106	Low Profile C-Stirrup
12	2	422013	Guardrail, 3m
13	8	421520	Guardrail Post
14	4	934113	Roller Bumper, 6x15" White
15	6	934109	8in. Caster Assy.w/Stem
16	2	424001	Quick Pin, each
17	2	934178	Midrail Counterweight Bracket
18	2	920160	Longhorn Assy., 40in
19	8	820104	Counterweight, 50 lb

B



C



Hoists NOT shown

**NOTE:** This layout configuration is designed and approved ONLY for use with Bee Access accessories on ALTREX or UP-STAGE modular framework components. If any other components are used, Bee Access is not responsible for the platform's integrity and will take no liability for any platform failure.

**WARNING:** Platforms must be raised and lowered evenly to prevent crack or torn welds or other failure. Failure to do so may result in injury or death.

The information contained in this drawing is the sole property of Bee Access Products. Any reproduction in part or whole without the written permission of Bee Access Products is strictly prohibited.



Special Porch Application

Scale 1:60	Do not scale drawing.	Weight: 1715 LBS
Approvals Drawn	By: BJA	Date: 06-02-16

Product Line/Project: <b>Platform</b>	REV. <b>1</b>
Part No. <b>SP1485-001 App</b>	Sheet <b>1 of 1</b>

D

5 4 3 2 1